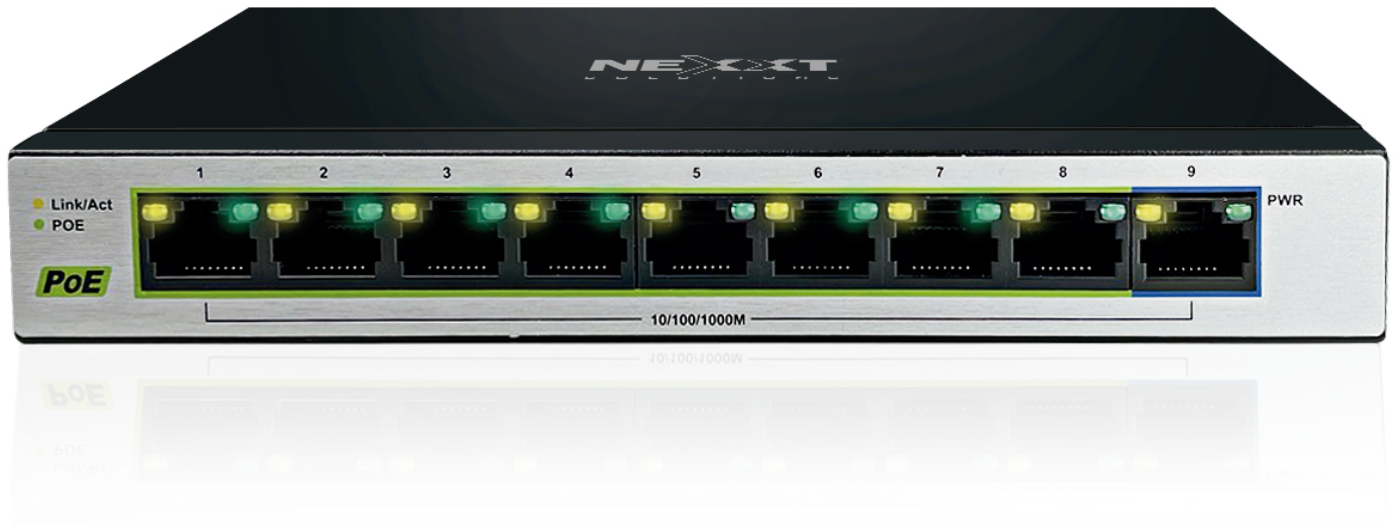


NEXXT[®]

S O L U T I O N S

INFRASTRUCTURE

Professional Series



VertexV900P

9-PORT POE+ GIGABIT DESKTOP SWITCH

Model: **NSW-V900P**

Copyright statement

Nexxt Solutions® is a registered trademark. Other trademarks or brand names contained herein are the trademarks or registered brand names of their respective owners. Copyright of the whole product as integration, including its accessories and software, belongs to Nexxt Solutions®. No individual or third party is allowed to copy, plagiarize, reproduce, or translate it into other languages, without express consent from Nexxt Solutions®. All the photos and product specifications mentioned in this manual are used as reference only. Upgrades of software and hardware may occur, and should there be any changes, Nexxt Solutions® shall not be responsible for notifying about any such modifications in advance. If you would like to know more about our products, please visit our website at www.nexxtsolutions.com.

Note: The diagrams included in this manual are not exact visual reproductions of the actual product. They are abstract, schematic representations designed to illustrate the most general or relevant aspects of the product, its installation and use. The product may therefore present slight variations in its appearance, without affecting its functionality or performance.

Safety measures.

Warning:

- In a residential environment, running this device may cause radio interference.
- Please do not place the switch near water or damp places and prevent water or moisture from entering the switch housing.
- Ensure that the working environment of the switch is clean. Excessive dust may cause electrostatic adsorption, which not only affects the service life of the device, but also easily causes communication faults.
- To avoid the danger of electric shock, please do not open the case when the switch is working. Do not open the case of the switch on your own, even if it is not charged.
- Insert the power module into the chassis in the correct direction according to the installation instructions. Otherwise, the device cannot be powered on.
- Pluggable power modules of different specifications cannot be mixed into the same device.
- Before cleaning the switch, remove the power plug from the switch. Do not use liquid to clean the switch and do not wipe it with a wet piece of cloth.

1. Introduction:

Versatile and energy-efficient connectivity for smaller networks

The **Vertex V900P** is an unmanaged compact switch especially designed for small business environments that require advanced internet capabilities. Upgrade your local wired network with this 9-Port Gigabit Desktop PoE Switch, featuring automatic polarity switching function to reduce congestion and redundant network communication.

Vertex V900P's eight gigabit Ethernet auto-sensing ports and one gigabit Uplink port add up to a total of 9 UTP/STP ports with auto-cross MDI/MDIX, including store-and-forward function to make sure that packets are sent to each port effectively. These features provide high bandwidth and boost connectivity by automatically optimizing speed for each connected device, pushing a signal up to 328 ft across a network cable. The switch supports the 802.3af/at PoE standard and with its maximum budget of 60W it can power compliant devices such as access points, VoIP phones and IP cameras.

1.1 Features

- Hassle-free plug and play installation. No configuration is required to integrate it into your network.
- Transmission Distance up to 328 ft (100 m), speed up to 1,000 Mbps.
- Compatible standards: To achieve greater adaptability to different Ethernet environments, this switch complies with the following standards: IEEE802.3, IEEE802.3u, IEEE 802.3ab, IEEE 802.3x, IEEE 802.3i, IEEE 802.3az, IEEE 802.3at and IEEE 802.3af.
- Add up to 8 devices to a local network with 9 10/100/1000Mbps Auto-Negotiation RJ45 ports.
- Supports Auto-MDI/MDIX.
- 8 PoE+ ports with a total power supply of 60W. By supporting the 802.3af/at POE protocols, the switch automatically identifies and powers PoE compliant devices while enabling data transmission only to non-PoE clients.
- LED indicators for monitoring power, link, activity.
- Metal case with sleek and compact design ideal for desktop installation. Its durable construction provides better heat dissipation. Its passive cooling system ensures quiet operation with less noise.
- Automatic polarity switching Fast Ethernet RJ-45 port.
- Store-and-forward switching mode.

1.2 Package contents

Upon opening the box, ensure that the following items are included:

- 9-port switch
- Power adapter

If any of the above-listed items are missing or damaged, please contact the reseller who you purchased the switch from for a replacement.

1.3 Front and rear panel overview

The front panel of the switch features nine 9 X 10/100/1000/Mbps RJ45 Ports [AUTO Negotiation/AUTO MDI/MDIX] ports and includes Link/Act, Power/connected and PoE light indicators. Please refer to the detailed description of these indicators on the LED chart. The DC power jack is located on the rear panel of the switch.

- 1. 1/2/3/4/5/6/7/8 Gigabit PoE RJ45 ports
- 2. Uplink port
- 3. DC input
- 4. Grounding terminal

Front View



Back View



Caution

Please use the supplied power adapter only. The use of another adapter may damage the switch and void the warranty.

2.1 LED indicators

The LED indicators provide information about the power and link status of each corresponding port. These indicators also facilitate the monitoring and troubleshooting of the device.

LED indicator	Color	Status	Description
1. Power LED indicator	Green	On	<ul style="list-style-type: none">The corresponding port is correctly connected to a client device and is actively receiving or transmitting data packets.Port 9: Power is being supplied to the switch via the Uplink port.
		Off	<ul style="list-style-type: none">Ports 1-8: The port is being used only for data transfer (linked to a non PoE device).Port 9: No powering device is connected via the Uplink port.
2. Link/Act indicator	Orange	Blinking	Ports 1-4: The port is powering a PoE device.
		Off	No client device is connected to the port, or no data is being received or transmitted through the port.

3 Installation

3.1 Preliminary steps

Before connecting the Vertex V900P to the network, make sure to follow the recommendations listed below:

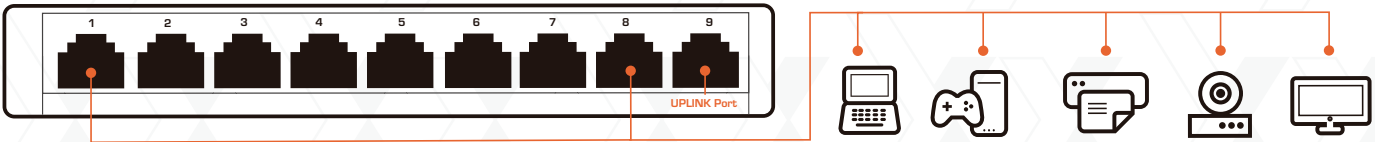
- Never place heavy objects on top of the switch.
- Place the switch on a secure, stable and clean surface. The switch can be mounted on the wall or placed free-standing on a desktop.
- Check the power supply to confirm a safe connection.
- Make sure there’s adequate space for proper heat dissipation and ventilation around the switch. Allow at least 10 cm clearance between the rear panel and the wall to dissipate hot air. If you need to stack other devices on top of the switch, a minimum separation of 1.5 cm should be used
- Electrical power supplied should match the voltage specified.
- Never install a power cord while it is electrified.
- Do not power the switch before cabling is completed.

3.2 Connection of the switch

Use a standard ethernet cable to connect the switch to the network devices as illustrated below. Switch ports will automatically adjust to the characteristics (AUTO Negotiation/AUTO MDI/MDIX) of the device that is connected. To verify whether a device is connected or not, refer to the LED indicator table for details.

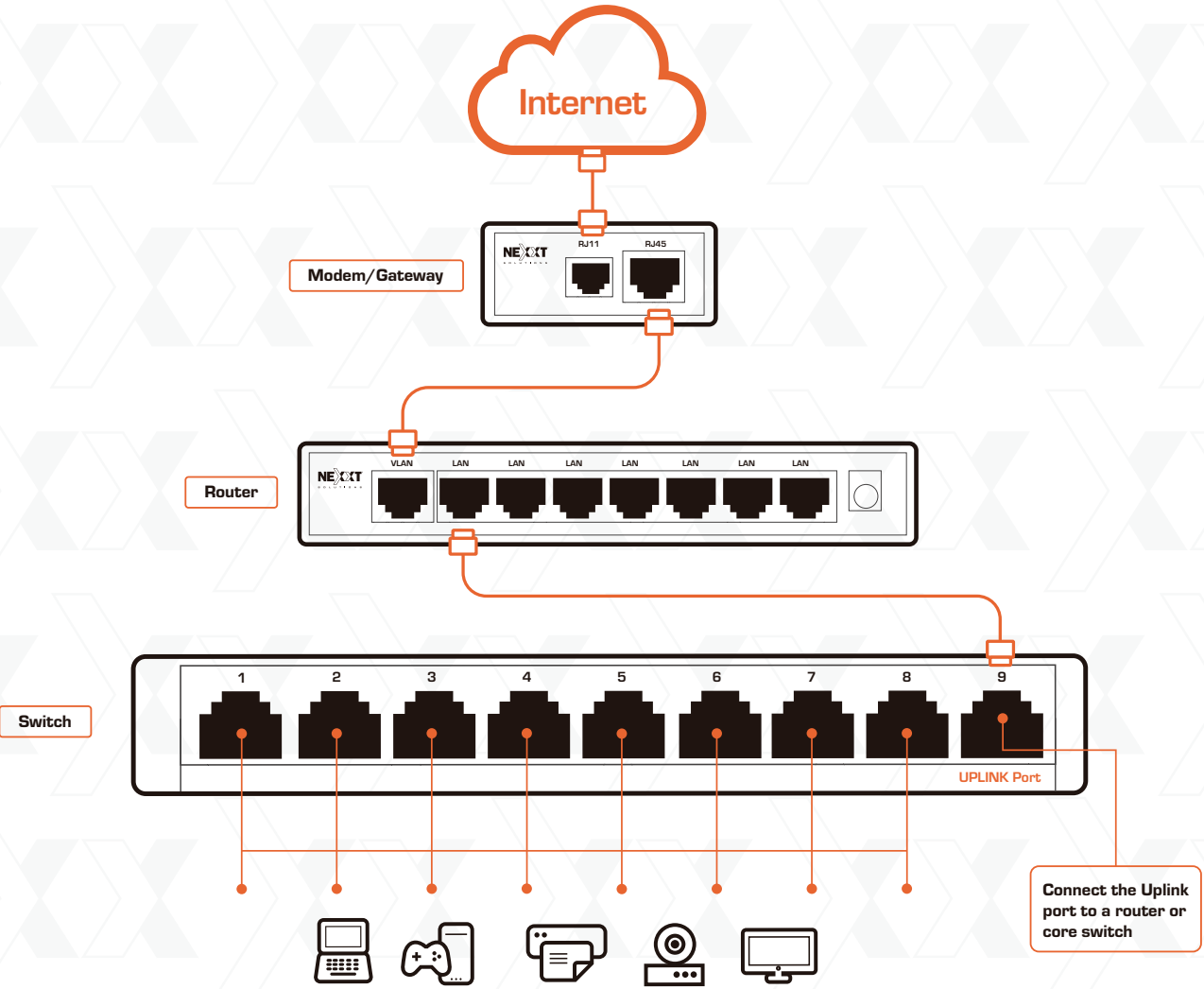
To verify whether a device is connected or not, refer to the LED indicator table for details.

Basic connection diagram



Commonly used method to set up an Ethernet connection.

With nine 10/100/ 1000/Mbps RJ45 ports, you can easily expand your network by connecting multiple devices, such as computers, routers, servers, TV sets, printers and gaming consoles.



Specifications

MPN		NSW-V900P
Hardware features		
Interface	8x 10/100/1000/Mbps RJ45 PoE+ Ports (Ports # 1 to 8) 1x 10/100/1000/Mbps RJ45 Uplink Port (Port # 9) AUTO Negotiation	
Standards	IEEE 802.3, IEEE 802.3u, IEEE 802.3ab, IEEE 802.3x, IEEE 802.3at/af	
Network Media	10BASE-T: UTP category 3, 4, 5 cable (maximum 100m) EIA/TIA-568 100Ω STP (maximum 100m) 100BASE-TX: UTP category 5, 5e cable (maximum 100m) EIA/TIA-568 100Ω STP (maximum 100m) 1000BASE-T: UTP category 5, 5e, 6 or above cable (maximum 100m) EIA/TIA-568 100Ω STP (maximum 100m)	
Data Rate	18 Gbps	
Forwarding Rate	13.392Mpps	
Housing	Metal Case	
PoE Support	Yes	
VLAN	N/A	
LED	1 x Green LED = Power 9 x Orange LEDs = PoE 8 x Green LEDs = 10/100M/1000M/LINK/ACT	
Dimensions	7 X 4.13 X 0.98 in (17,8 x 10,5 x 2,5 cm)	
Weight	15.16 oz (430 g)	
AC Power	100-240VAC 50/60Hz	
DC Power Input	55VDC/1.3A	
Power consumption	71.5W	
Power adapter cord length	3.93 ft (1,2 m)	
Environment	Operating Temperature: 0°C~40°C (32°F~104°F) Storage Temperature: -20°C~70°C (-4°F~158°F) Operating Humidity: 10% ~ 90% non-condensing Storage Humidity: 5%~90% non-condensing	
Package Contents	9-Port Desktop Switch, manual, power adapter	

FCC statement

This equipment has been tested and found to comply with the limits for a Class A digital device, pursuant to part 15 of the FCC Rules. These limits are designed to provide reasonable protection against harmful interference in a residential installation. This equipment generates, uses, and can radiate radio frequency energy and, if not installed and used in accordance with the instructions, may cause harmful interference to radio communications. Operation of this equipment in a residential area is likely to cause harmful interference in which case the user will be required to correct the interference at his own expense.

FCC caution: Any changes or modifications not expressly approved by the party responsible for compliance could void the user's authority to operate this equipment.

This device complies with part 15 of the FCC Rules. Operation is subject to the following two conditions: (1) This device may not cause harmful interference, and (2) this device must accept any interference received, including interference that may cause undesired operation. The manufacturer is not responsible for any radio or TV interference caused by unauthorized modifications to this equipment.



www.nexxtsolutions.com

Nexxt Solutions® is a registered trademark. All rights reserved. All other brand names and trademarks are the property of their respective owners. Made in China.

NEXXT[®]

S O L U T I O N S

INFRASTRUCTURE

Professional Series

VertexV900P

9-PORT POE+ GIGABIT DESKTOP SWITCH