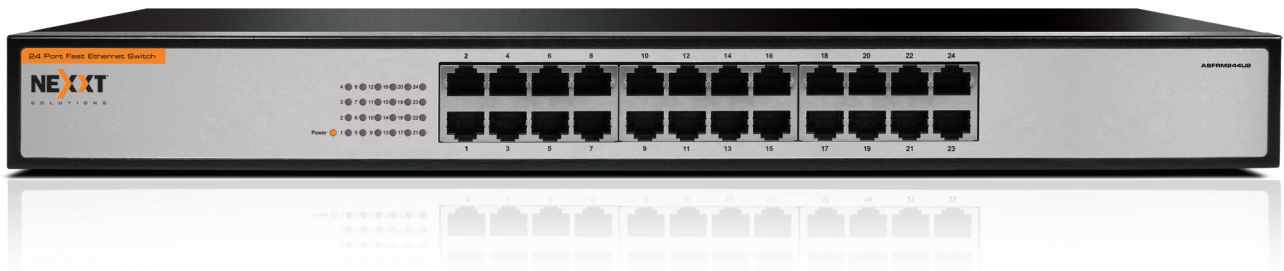




S O L U T I O N S

C O N N E C T I V I T Y



## 24-Port Fast Ethernet Switch | User's Guide

Model: **ASFRM244U2**

## **Copyright Statement**

Nexxt Solutions™ is a registered trademark. Other trademarks or brand names contained herein are the trademarks or registered brand names of their respective owners. Copyright of the whole product as integration, including its accessories and software, belongs to Nexxt Solutions Ltd. No individual or third party is allowed to copy, plagiarize, reproduce, or translate it into other languages, without express consent from Nexxt Solutions, Ltd. All of the photos and product specifications mentioned in this manual are used as reference only. Upgrades of software and hardware may occur, and should there be any changes, Nexxt Solutions shall not be responsible for notifying about any such modifications in advance. If you would like to know more about our products, please visit our website at [www.NexxtSolutions.com](http://www.NexxtSolutions.com).

## **24-Port Fast Ethernet Switch**

### **1. Introduction**

- 1.1 Switch features
- 1.2 Package contents
- 1.3 Front and rear panel specifications
- 1.4 LED indicator definitions

### **2. Installation**

- 2.1 Preliminary steps
- 2.2 Installation procedure
- 2.3 Application

### **3. Product specifications**

## 1. Introduction

The **ASFRM244U2** is an unmanaged rack-mountable Fast Ethernet Switch, specially designed for small to medium businesses that require high performance network connectivity and smooth data transfer. It features 24 UTP/STP RJ-45 ports with auto MDI/MDIX, which can operate at 10/100 Mbps. By integrating the **ASFRM244U2** switch into your network, the speed and network efficiency will be significantly enhanced. Its standard 19-inch rack-mountable case along with its improved transmission rates make it the ideal choice for small and medium sized networks.

## 1.1 Switch features

- Complies with IEEE802.3 10Base-T Ethernet, IEEE802.3u 100Base-TX fast Ethernet standards.
- Supports IEEE802.3x flow control for full-duplex mode, and backpressure flow control for half-duplex mode.
- 24 RJ-45 ports, supporting 802.3 NWay auto-negotiation capabilities.
- Each RJ-45 port supports auto-MDI/MDIX selection for easy integration into a network.
- Supports MAC address auto-learning and auto-aging functions.
- Features store- and- forward switching method.
- Supports up to 4.8Gbps backplane bandwidth.
- Each port supports transmission rates of up to 148800pps.
- 8000 MAC address table to meet diversified applications.
- Dynamic buffer optimizes and balances the network load automatically.
- Built-in power supply for 100-240 volts for worldwide compatibility.
- 6kV lightning proof power supply protection.

## 1.2 Package contents

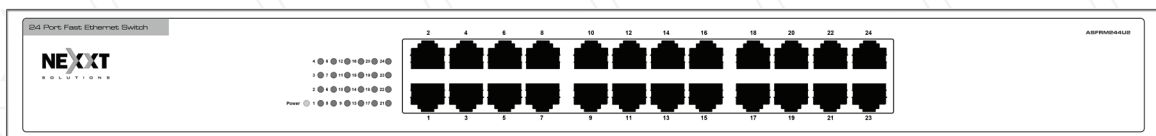
Upon opening the box, ensure that the following items are included:

- One 24-port switch
- One power adapter
- Network cable
- User guide
- Rack-mount bracket kit
- Self adhesive pads (for on-shelf installation)

If any of the listed items are missing or damaged, please contact the reseller who you purchased the switch from for a replacement.

## 1.3 Front and rear panel specifications

The front panel includes sixteen 10/100 Mbps UTP/STP ports, with the corresponding number of lights to display the activity on each one, plus one indicator light for power.



Front panel view of the switch

On the rear panel, you will find the AC power connector with the input range marked.

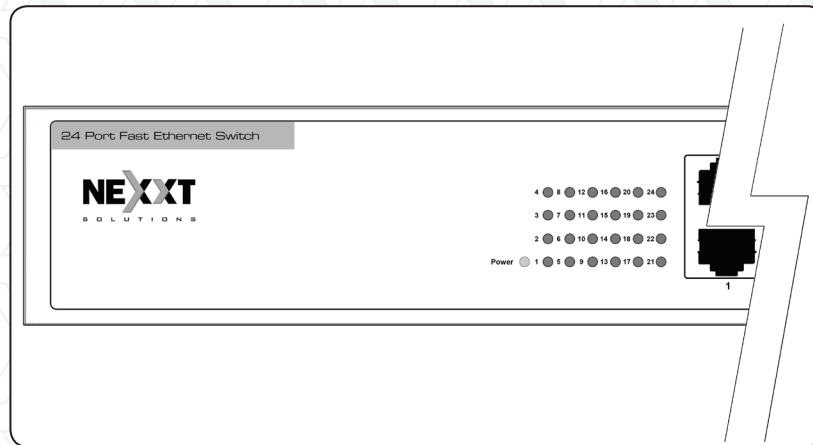


## Rear panel view of the switch

**Notice:** Please use the supplied power adapter only. The use of any other adapter may damage the unit and void the warranty .

### 1.4 LED Definitions

LED indicators provide information about the connection and Link/ACT status of the switch. They also facilitate activity monitoring and troubleshooting the performance of the network.



## LED indications

The following chart shows the LED indicators of the switch, along with an explanation of each indicator.

LED	Color	Status	Description
Power	Orange	ON	The switch is powered on
	—	OFF	The switch is turned off
Link/Act	Orange	ON	Other devices are connected to a port on the switch
	Orange	Blinking	The port is transmitting or receiving data packets



## 2. Installation

### 2.1 Preliminary steps

Observe the safety instructions detailed below before connecting the device into your network:

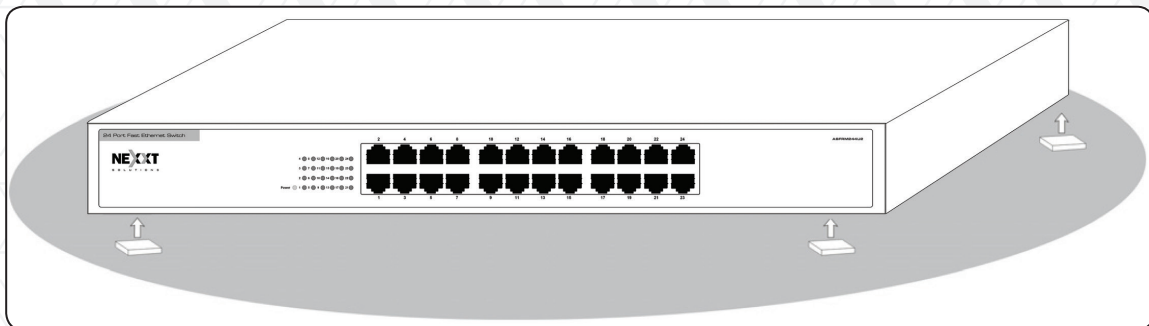
- Select a location with adequate ventilation all around the unit.
- Place the switch on a secure, stable and clean surface.
- Allow at least 10 cm clearance between the rear panel and the wall to dissipate hot air.
- Never place heavy objects on top of the switch.
- If you need to stack other devices on top of the switch, a minimum separation of 1.5 cm should be used.
- Electrical power supplied should match the voltage specified.

### 2.2 Installation procedure

The switch can be mounted in a rack or placed free-standing on a desktop.

#### 1. Installation on a flat surface

Attach the four self-adhesive rubber pads (supplied) in each corner on the bottom of the chassis.

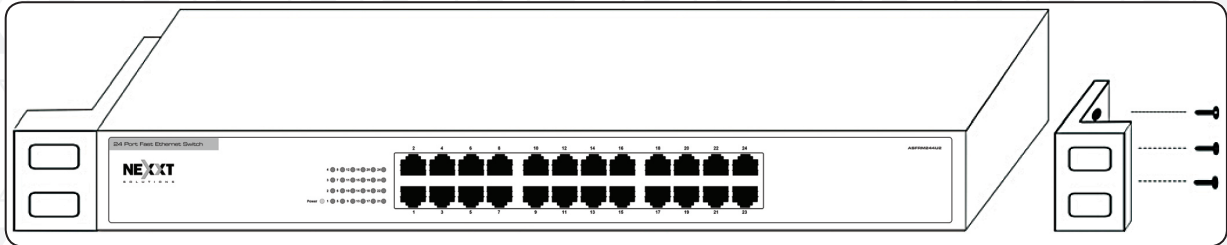


**Attach rubber pads to the bottom of the unit**

## 2. Installation in a standard 19-inch rack

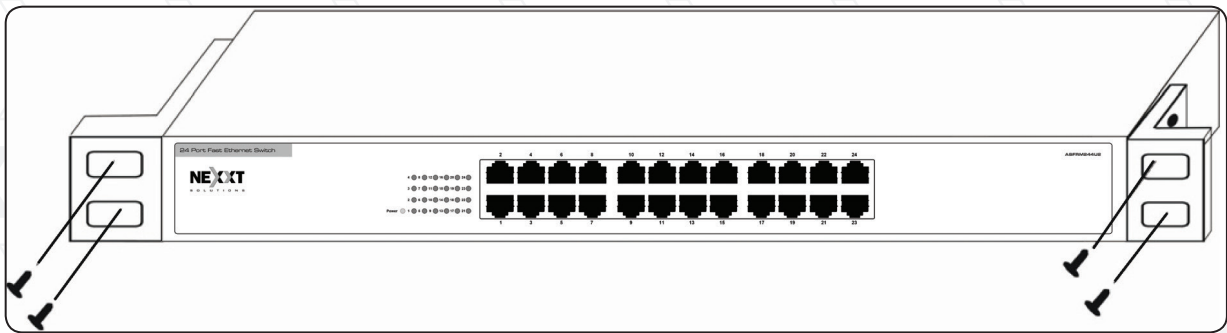
To install the mounting brackets on the switch, follow the steps described below.

- First, make sure the rack is properly secured, stable and strong enough to support the weight of the switch.
- Attach the two mounting brackets on both sides of the switch using the supplied screws.



**Rack-mount "L" bracket installation**

- Place the unit into the rack, making sure the mounting holes on the device line up with the mounting holes on the rack.
- Fasten the chassis in the rack with the screws.



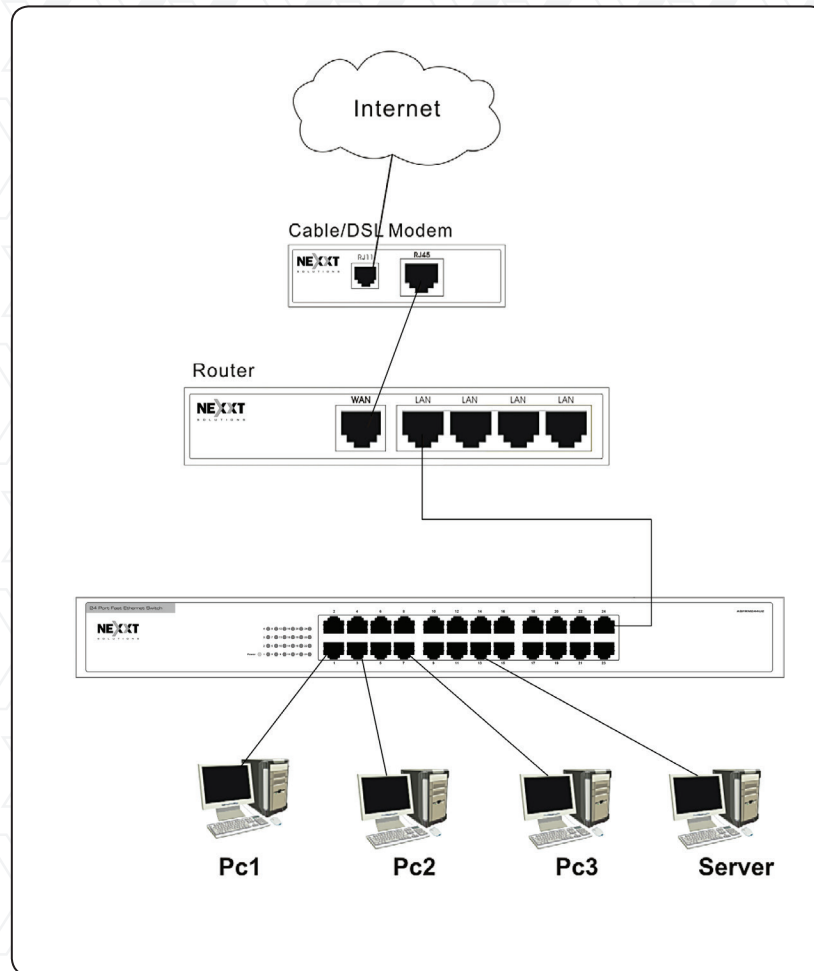
**Installing the switch in a standard 19-inch rack**



## 2.3 Application

Use a standard Ethernet cable to connect the switch to the network devices, as illustrated below. Switch ports will automatically adjust to the characteristics (MDI-II/MDI-X, speed, duplex) of the device that is connected.

The orange Link/Act LEDs for each port will flash when the link is available.



### Commonly-used method to access the internet

With twenty-four UTP/STP ports, multiple PCs, printers and other network devices with RJ45 ports can be connected simultaneously to this switch.

### 3. Specifications

Features	
Standards	IEEE802.3 10BASE-T Ethernet IEEE802.3u 100BASE-TX Fast Ethernet
Protocol	CSMA/CD Ethernet
Data transmission rate	Ethernet: 10Mbps (half-duplex) 20Mbps (full-duplex) Fast Ethernet: 100Mbps (half-duplex) 200Mbps (full-duplex)
Topological structure	Star
Network cables	10Base-T: Cat.3 UTP or above (100m) 100Base-TX: Cat.5 UTP /STP (100m)
Port quantity	24 10/100Mbps RJ45 ports
Performance	
Transfer mode	Store-and-forward
MAC address table	8000 entries
Packet filtering / Forwarding rate	14880pps (10Mbps) per port 148800pps (100Mbps) per port
MAC address learning	Auto-learning, auto-aging
Backplane bandwidth	4.8Gbps
Physical and environmental	
AC input voltage	100-240V ~ 50/60Hz
Power consumption	20W maximum
Operating temperature	0°C ~ 40°C
Storage temperature	-40°C ~ 70°C
Storage humidity	10% ~ 90% RH (non- condensing)
Operating humidity	5% ~ 90% RH (non- condensing)

Should you need further information regarding this product or need technical assistance, please contact us at:

- [info@nexxtsolutions.com](mailto:info@nexxtsolutions.com) or
- [techsupport@nexxtsolutions.com](mailto:techsupport@nexxtsolutions.com).