



XpyBell

HIGH-DEFINITION OUTDOOR
WIRELESS DOORBELL WITH MOBILE APPLICATION

AIOMPFI4U1

Table of content

1. Introduction

2. Package content

3. Product layout

4. Preliminary steps

- 4.1. Installing the mounting bracket
- 4.2. Powering your doorbell
- 4.3. Additional terminal wiring
- 4.4. Memory card installation
- 4.5. Mounting the doorbell onto the bracket
- 4.6. Doorbell LED indicator
- 4.7. Doorbell communication diagram

5. Advanced operation – Android

- 5.1. Mobile application
- 5.2. WiFi setup
- 5.3. Cloud storage account
- 5.4. Main page interface
- 5.5. Live view
- 5.6. Answering your door
- 5.7. Event video playback

6. Advanced configuration – Android

- 6.1. Admin password
- 6.2. Device security code
- 6.3. Time setup
- 6.4. WiFi settings
- 6.5. Cloud settings
- 6.6. Firmware update
- 6.7. Notifications
- 6.8. Sensitivity
- 6.9. SD card
- 6.10. Video and photo
- 6.11. Power management
- 6.12. Doorbell sound
- 6.13. Relay trigger duration
- 6.14. Audio effect
- 6.15. Device information

7. Advanced operation – iOS

- 7.1. Mobile application
- 7.2. WiFi setup
- 7.3. Cloud storage account
- 7.4. Main page interface

- 7.5. Live view
- 7.6. Answering your door
- 7.7. Event video playback

8. Advanced configuration – iOS

- 8.1. Admin password
- 8.2. Device security code
- 8.3. Time setup
- 8.4. WiFi settings
- 8.5. Cloud settings
- 8.6. Firmware update
- 8.7. Notifications
- 8.8. Sensitivity
- 8.9. SD card
- 8.10. Video and photo
- 8.11. Power management
- 8.12. Doorbell sound
- 8.13. Relay trigger duration



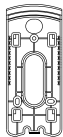
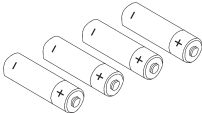
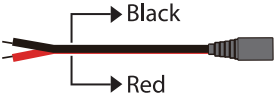





1. Introduction

Thank you for purchasing the **XpyBell** high-definition wireless doorbell video camera from Next Solutions. The combination of a high-definition camera, infrared technology with two-way audio and alarm offers a versatile wireless monitoring solution that works in any home with or without an existing doorbell installation. Video can be stored directly to a SD memory card, providing users with both viewing and recording capabilities. Its compact and attractive enclosure with an IP55 rating is designed to withstand the exposure to the elements in harsh outdoor environments.

Please review this guide thoroughly to ensure proper installation and operation of this innovative and feature-rich doorbell camera.

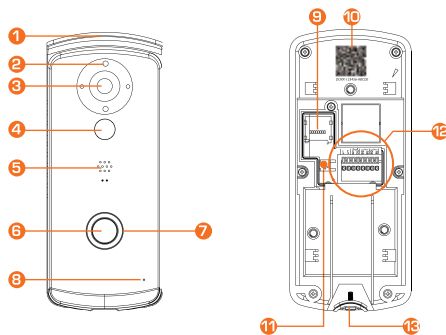
2. Package content

Open the box and make sure all items listed below are included:

User manual 1 pc		
		
Wireless doorbell 1 pc	Wall bracket 1 pc	Type AA battery 4 pcs
		
DC power cable 1 pc	Relay trigger cable 3 pcs	Hardware kit 1 pc
		
15VDC power adapter 1 pc	8GB micro-SD card adapter 1 pc	Tamper-proof screwdriver 1 pc
		

3. Product layout

Wireless doorbell

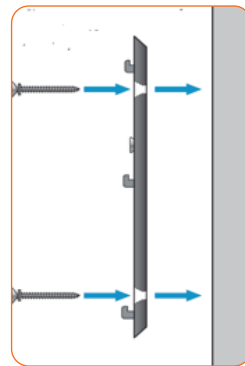


1. Mounting bracket with visor
2. Light sensor
3. HD camera with infrared LEDs for night vision
4. Motion sensor
5. Speaker
6. Push button
7. Bell LED indicator
8. Microphone
9. SD card slot
10. QR code label
11. Set up / Reset button
12. I/O pin connections (wire terminals)
13. Battery compartment

4. Preliminary steps

4.1 Installing the mounting bracket

1. First choose the location to mount the doorbell camera, preferably one that offers the best viewing angle and Wi-Fi reception. If the Wi-Fi reception is weak, we recommend using a Range Extender or Powerline Adapter. Visit our Next Solutions website to learn more about these types of products.
2. If wiring to an existing doorbell, make sure that the power source is 9-36V. Unscrew and remove the doorbell from the wall. Carefully disconnect the wires from the doorbell.
3. If dealing with 110/220V, use the provided power adapter or batteries to power up the XpyBell.
4. Using the mounting bracket as a template, mark the three screw holes with a pencil.
5. If mounting the device on a stucco, brick or concrete wall, use a masonry bit to drill pilot holes in order to insert the anchors. On wood or drywall you can skip this step.
6. Drive the screws into the anchors or directly into the wall until they are flush with the mounting bracket, and the bracket is flat against the surface. Make sure all wires are properly guided through the middle of the bracket.



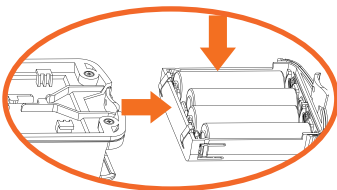
4.2 Powering your doorbell

Important:

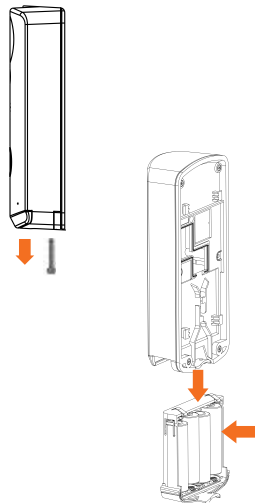
- The doorbell supports three different power configurations:
 1. It can run independently on DC power from four AA batteries.
 2. It can be plugged to an AC outlet using the provided power adapter.
 3. It can be hardwired to an existing doorbell connection in your home of up to 36V at 600mA.

Option 1. Battery operated

- 1 Unfasten the tamper-proof screw with the supplied tool.
- 2 Slide the battery compartment down and insert the four supplied AA batteries, making sure to observe the correct polarity.
- 3 Close the battery compartment and replace the tamper-proof screw.

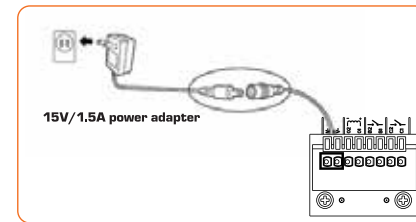


6



Option 2. AC adapter

1. With a phillips-head screwdriver, remove the screws from the seal-proof back plate to expose the pin connector block.
2. If using the supplied AC adaptor, please note that the red and black DC cable comes preinstalled in the I/O terminal block, so as to make sure the correct polarity is observed.
3. Connect the power cable extending from the doorbell camera to the cable of the power adapter, making sure the plug is pushed all the way in.
4. Then plug the power adapter to an electrical outlet.



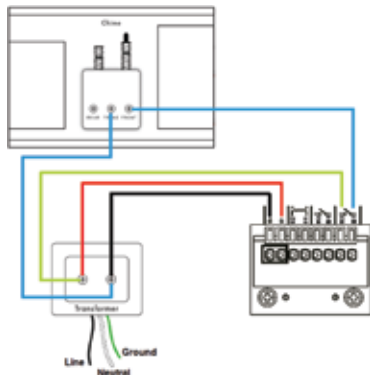
Option 3. Existing doorbell with low voltage transformer

Warning: It can only be connected to a low voltage transformer or power source with an electrical rating of 9-36V AC/DC. If wiring with an existing chime the power rating of the chime I/O port cannot exceed 24V.

1. Remove the preinstalled cable from the I/O terminal block on the back of the doorbell camera.
2. Insert the wires coming out of the wall that were originally connected to your existing doorbell to the I/O terminal block. If more than 2 wires are present a pair will be used to power the doorbell camera from the low voltage transformer and another pair will be used to wire the chime. Refer to the diagram below.

7

Hardwire power requirement: Maximum 36V AC/DC

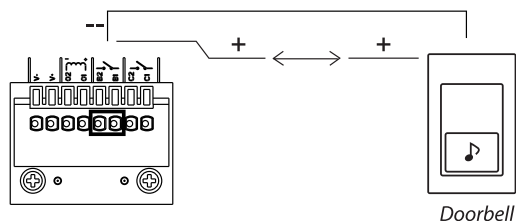


4.3 Additional terminal wiring

1. Door chime

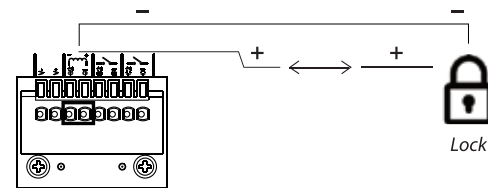
To connect the device to an existing doorbell installation, follow the diagram to the right.

Note: Chime terminals can only support up to 24V AC/DC sources.



2. Remote door unlock

To open your door remotely from your smartphone, tablet or PC, connect one relay trigger cable into the corresponding terminal block pins, as shown on the diagram to the right.

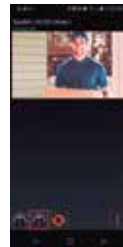
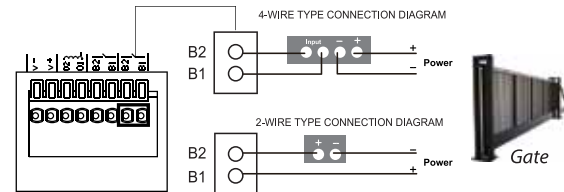


Note:

- Remote door unlock function not supported when powered by AA batteries.
- For remote door unlock function to work at 12V/ 1A, the doorbell must be powered using an AC/DC adapter rated at 15V/ 1.5A or higher.

3. Electric gate (2/4 type connection)

To open your gate remotely from your smartphone, tablet or PC, connect one relay trigger cable into the corresponding terminal block pins, as shown on the diagram to the right.



Note:

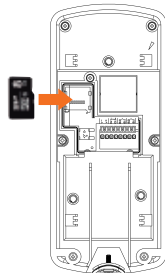
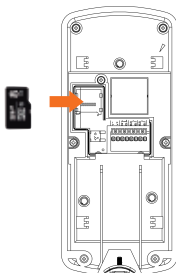
- Door and gate unlock functions are not supported when powered by AA batteries.
- For remote door unlock function to work at 12V/1A, the doorbell must be powered using an AC/DC adapter rated at 15V/1.5A or higher.
- Dry contact terminals can only support up to 24V AC/DC sources.

4.4 Memory card installation

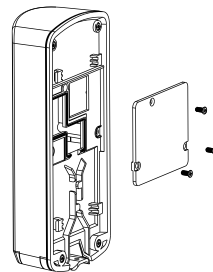
The doorbell includes an 8GB micro-SD card to store footage and images captured by the camera. If you want to install a memory card with higher capacity (of up to 32GB), you can do so at this stage.

1. With a phillips-head screwdriver, remove the screws from the seal-proof back plate to expose the I/O terminal block, if you have not yet done so.

2. Slide up to unlock the latch and lift with your fingertips to expose the tray, if you want to remove the included storage device and insert a new one.

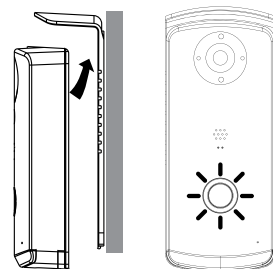


3. Push down the latch to secure the tray. Finish by replacing the back cover and tighten the screws, as shown in the figure to the right.

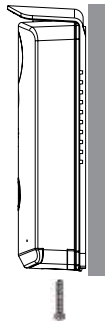
**4.5 Mounting the doorbell onto the bracket**

1. Now with the batteries and memory card installed, and the compartments are tightly closed, attach the unit to the mounting bracket by aligning the tabs on the doorbell with the holes, as shown in the figure to the right.

Note: At this stage, we recommend taking a picture of the QR code located on the back of the doorbell. This will be used during the mobile app setup.



2. Push the device firmly towards the wall and then down until it clicks in place.
3. Insert the tamper-proof screw from the base of the bracket up through the battery compartment cover hole, so as to secure the device to the mounting location.



4.6 Doorbell LED indicator

The LED indicator allows the user to observe the status of the device in real time.

Status	Description
Hardwired connection	
Firmware update	LED blinks alternatively red and blue
Powered on/ Stand by	LED glows red.
Pairing mode	LED blinks alternatively red and blue
Battery power	
Stand by	LED is off
Pairing	LED blinks alternatively red and blue
Firmware update	LED blinks alternatively red and blue

4.7 Doorbell communication diagram



Visitor presses button.
XpyBell connects to your home Wi-Fi network.
 Video feed is sent to mobile devices over Wi-Fi or cellular connection.
 You see and hear them. They hear you.

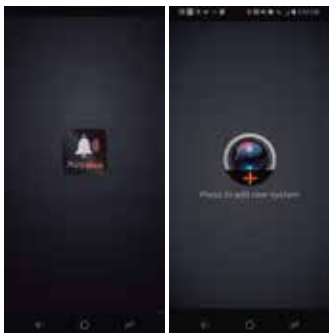
5. Advanced operation- Android

5.1 Mobile application

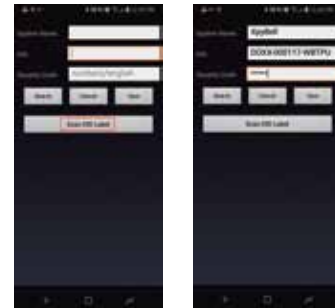
1. Download the **XpyBell** application from Google Play.



2. Your mobile device must be actively connected to the Wi-Fi network in which the doorbell camera will be linked to.
3. Next, launch the app from your mobile device and select **Add new system**.



4. Tap the **Scan DID label** option to read the QR code located on back of the doorbell camera, or enter the DID sequence manually.
5. Enter a **System name** to identify the device (maximum of 20 characters).
6. Enter the default **Security code 123456** assigned to the device:



7. Tap on **Save** after all fields are filled. Once done, tap on **Yes**, to confirm the added device.



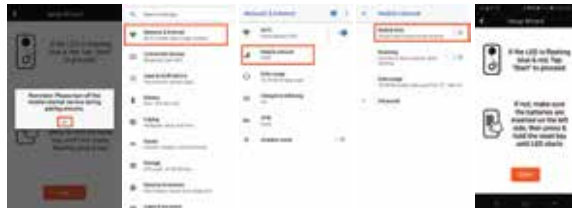
5.2 Wi-Fi setup

1. Once you complete the above steps, the Wi-Fi configuration screen will pop up.
2. Click on **Setup** followed by **Start**. Make sure that the LED bell indicator is blinking alternatively red and blue.



Note: If the doorbell LED is not blinking red and blue, take off the back panel and press and hold the reset button until the LED starts blinking red and blue.

3. The next popup will ask you to turn off the Mobile Data service. Tap on **OK**, this will make the app take you to your phone **Settings**. Once there, select **Network & Internet – Mobile Network** (this may be called something different on your device). Disable the Mobile Data (refer to your phone's manufacturer manual if unsure where this setting is located). Press the back button on your phone to return to the **XpyBell** app. Once there, tap on **Start** to connect to the doorbell.

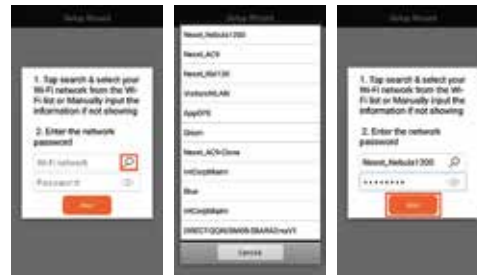


4. The app will now automatically switch to the XpyBell.



5. You are now ready to connect the XpyBell to your Wi-Fi router: The SSID of your router can be searched and added automatically. Tap on the **Search** icon to display a list of available Wi-Fi routers in your area. Choose the Wi-Fi network you want to connect to and tap on **Next** to continue.

Note: If you do not see the Service Set Identifier (SSID), please enable the broadcasting function on your router. This information can be also entered manually.



6. Wait a couple of minutes for the network setup to complete. Tap on **OK** when done.

7. You must now change the default security code. Create a brand new password that is simple to remember but hard to guess, and click **Save** when done. If associating other mobile devices to the doorbell, remember that the new password will need to be used to log in.



5.3 Cloud storage account

A cloud account is designed to keep a record of events and footage captured by the doorbell camera. Please note that you are given the option of creating a new account or signing into an existing one. All registered devices will have access to the doorbell camera data associated to that account.

During this initial setup, the Setup Wizard will guide you on how to access a cloud-based private Google account. However, you have the option of configuring one at a later time. Video footage will still be recorded in the micro-SD memory card.

In order to link your cloud-based account, please follow the steps below:

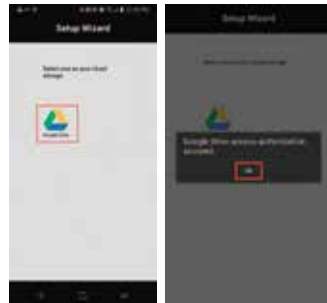
1. Start by clicking on **Proceed**.



2. A Cloud Service Account will be required. If you already have an account, please sign in and continue to step 3. If you do not have a Cloud Service Account, click on **Create Account**. Fill out the following fields: User ID, Password, and Confirm Password, and click on the check box to agree to the **Privacy Policy**. Enter the verification code, and then click **Submit**. Proceed to log in to the account you just created. Click **Sign In** to continue.

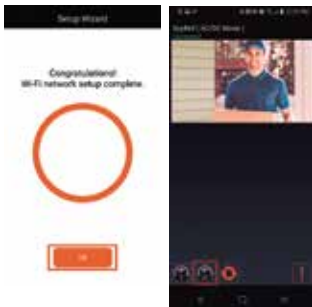


3. You will be prompted to choose a cloud storage. Tap on **Google Drive** (this requires the use of a Google Gmail Account). It may ask you to sign in to your selected Gmail Account. If it does, follow the on screen prompt. Once done, you should get a confirmation popup. Click on **OK**.



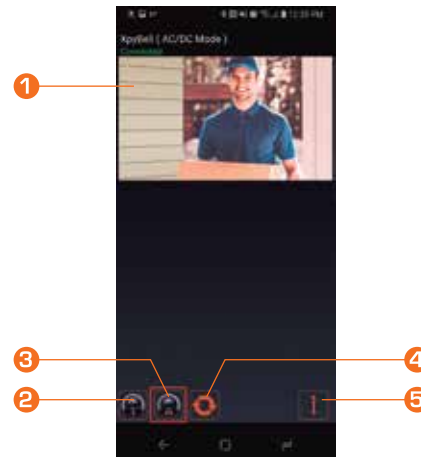
4. Click on **OK**. Setting up your brand new XpyBell Wireless Video Doorbell is now complete. Congratulations.



Reminder: Please turn your mobile data back on.





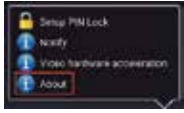
5.4 Main page interface

The main page will now be displayed on your mobile device. This interface shows an overview of the doorbell camera, with access to functions and configuration settings needed to manage and operate this monitoring device in your network.



Number	Icon	Function	Description
1		Status bar and Camera preview	Provides real-time system information, device name and connection status, including direct access to the camera's live feed when tapped.
2		Add device	Opens the menu to integrate and register a doorbell video device to your network.
3		Device settings	Grants access to the device configuration, advanced settings, activity log, storage and more.
3.1		Device Settings Additional settings	<ol style="list-style-type: none"> Once the submenu is enabled, click on the cog wheel  to access the device information page and the Advanced menu option. The latter requires administrator's credentials to log in. Click on the recycle bin  icon if you want to delete the doorbell camera from your device.

Number	Icon	Function	Description
			3. Click on the Event list  icon to filter and select the motion-triggered events you want to playback and/or download.
4		Refresh	Updates the connection and status of the doorbell.
5		Device information	Contains firmware app information, notification settings and PIN lock set up.
5.1		Device Information Setup PIN lock	<p>Sets up a PIN lock to block unauthorized users from viewing the camera, which must be entered every time the app is launched.</p> <ol style="list-style-type: none"> Enter a four-digit PIN code. Check the Enable lock when starting box. Confirm your PIN to unlock. <p>Note: If you forget the PIN, you must delete and reinstall the app.</p>
5.2		Device Information/Notify	This parameter enables or disables the push notification service on your mobile device every time motion is detected. Please note that the internet connection and network interference may affect the performance of this feature.









Number	Icon	Function	Description
5.3		Device Information–Video hardware acceleration	When enabled, this function enhances the playback quality of videos and audio.
5.4		Device Information–About	Displays the doorbell camera firmware version.

5.5 Live view

From the main page, click on the device preview to open the monitoring window and view footage captured by the camera on your mobile phone in real time. From this interface, the following actions can be performed.

Note: Live view does not work when the doorbell is on standby mode and only powered with batteries



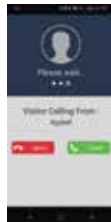
Icon	Function	Description
	Microphone	Tap once to speak with visitors standing in your front door. The icon changes from grey to orange. Tap once again to disable the microphone to end the conversation.
	Handset	Tap once to listen to visitors using your headset. No audio will be transmitted to doorbell unless the microphone is active (orange).
	Speaker	Tap to mute the audio coming from the doorbell. A second tap will restore the speaker function.
	Snapshot	Tap once to capture a snapshot of a video image coming from the doorbell camera. Image files are stored in your mobile device.
	Record	Tap to start recording footage captured by the doorbell camera. To stop the recording feature, tap once again.
	Stop video (audio only)	If you experience delays while communicating with the visitor due to slow connection speeds, press this button to stop video feed and free up bandwidth for audio stream only.
	Door unlock trigger	Tap the icon once and enter the admin password to remotely open the door for a visitor (3rd party device required).
	Gate unlock trigger	Tap the icon once and enter the admin password to remotely open the gate for a visitor (3rd party device required).

5.6 Answering your door

- When someone is at your door and presses the doorbell button, a call is automatically triggered to your smart phone, as illustrated below.



Just like any regular call, you may choose to:

- Ignore the visitor call request, or
- Accept the call from the visitor




5.7 Event video playback

The recorded footage captured by the camera is automatically saved to the memory card. You can remotely access the file(s) for playback.

- From the main page, tap on the **Device settings**  icon.
- Click on the **Event List**  icon to define a time range in order to filter and display all available recorded file(s) you want to view.



• SD card tab


 All motion-triggered events are stored in the memory card.

The number of available events will depend on the memory card storage capacity. Files stored in the memory card will be transferred to the cloud if: (A) you have activated the cloud storage service (Google Drive) and (B) if sufficient cloud storage space is available.

Files will not be transferred to the cloud if the maximum cloud storage has been reached. To free up more space for the cloud storage, you can manually delete unwanted files.

The camera will begin overwriting the oldest event(s) automatically when the memory is full. Backup files periodically if necessary.

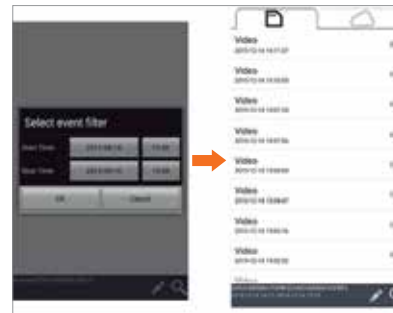
• Cloud service tab




 The cloud storage event list displays all motion-triggered events stored on the service.

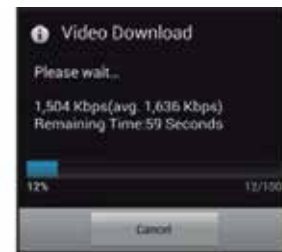
The number of available events will depend on the cloud storage capacity. Files stored in the cloud are initially transferred to the cloud from the local memory card.

The camera will stop uploading files when the maximum storage capacity is reached. To add storage space, please contact Google Drive directly. The excess information will be removed from the cloud storage once all the space allocated is used.

- To reproduce saved files, select the corresponding event listed either in the local or cloud service tab.






- During playback, you can tap on the **Pause**  icon to stop the video. To resume, tap on the **Play**  icon once again.
- If you want to save a copy of a particular event in your mobile device, select the file and then tap on **Download**  .
- Next, the video download window along with the progress bar appears on the display, as illustrated here.



Note:

While file download is in progress, the recording and live view of the camera will not be accessible to other users.

7. If you want to delete one or multiple events, tap on the **Edit**  icon to check the ones you wish to eliminate, followed by the **Recycle bin**  icon. To remove all files at once, tap the **Select all**  icon on the far right.



6. Advanced configuration- Android

The current chapter explains the advanced configuration parameters accessible only to the user with administrator rights.

General users can receive notifications and view images either captured or recorded by the camera, however, they are not allowed to manage the device.

6.1 Admin password

- This code is required to access the **Advanced Settings** page for system configuration and management of the doorbell camera. The default admin password is **123456**.
- For security purposes, we strongly recommend changing the default code to a new and personalized password, so as to prevent unauthorized access.
- A strong sequence must be composed of 8 alphanumeric characters (containing at least 1 uppercase letter, 1 lowercase letter and 1 Arabic numeral, with no spaces or special symbols).
- To keep your device protected, a good practice is to reset the admin password on a periodic basis.

Note: If you forget the admin password, press and hold the reset button for 5 seconds to restore the device to its factory-default configuration.

6.2 Device security code

- This code is required to setup or change the password that grants access to the device from a remote location. The default security code is **123456**.
- The application requires you to change the password after the initial configuration is completed. Refer to section **5.2 Wi-Fi setup** in this manual.
- A strong sequence must be composed of 8 alphanumeric characters (containing at least 1 uppercase letter, 1 lowercase letter and 1 Arabic numeral, with no spaces or special symbols).
- To keep your device protected, a good practice is to reset the security code on a periodic basis.

Note: If you forget the device security code, press and hold the reset button for 5 seconds to restore the device to its factory-default configuration.



6.3 Time setup

It synchronizes the time on your doorbell camera with the real time and date of your Wi-Fi network.

6.4 Wi-Fi settings

Use this menu to configure and manage the wireless connection to your network. For details, go to section 5.2 of this manual.

Note: Changes take effect after system reboots.

6.5 Cloud settings

- If you did not configure a Google private account during the initial setup, the application will automatically detect that no cloud storage is linked to the doorbell camera.
- An account can be set up at any time by selecting **Advanced** → **Cloud setting** → **Setup**. Then follow the steps described earlier in section **5.3 Cloud storage account** of this manual.
- Editing and management of the cloud-based account is also done through this menu.



- To modify the password, go to **Edit account**, fill the required fields and click on **Submit** when done.

- Select **Device management** to view all the devices registered to the cloud account.
- You can also remove the doorbell camera from the cloud account to stop using Google Drive as storage platform.



6.6 Firmware update

- Use this option to check and download the latest version of the **XpyBell** app.
- Make sure to insert a memory card with enough space before updating your device.

Note: Changes take effect after system reboots.

6.7 Notifications

- A push notification is sent to your mobile device to alert you every time activity is detected in or around your door.
- This function can be disabled if you do not wish to receive these alerts.

6.8 Sensitivity

- Enables or disables the **Motion detection** sensor of the camera.
- Please note that the device will not take snapshots, record videos or send out push notifications if the motion detection feature is disabled.

6.9 SD card

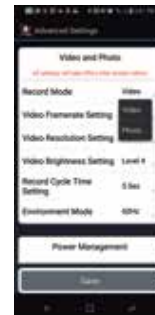
- The **SD card overwrite** function allows new files to overwrite previously recorded ones when the SD memory is full.
- It ensures that no important information is missed by backing up the most up to date video recordings captured by the camera.

6.10 Video and photo

This menu allows you to set all image and format related parameters, such as Record mode, Framerate setting, Video resolution, Brightness level, Record cycle time setting and Environment mode.

Record mode

Choose between taking a **Photo** or a **Video** when motion is detected.



Video framerate

- This menu allows you to determine the framerate speed for recording videos.
- It ranges from 15fps to a maximum of 30fps.
- The higher the frame rate you choose, the sharper and more detailed your footage will be for playback. However, more bandwidth is needed, and larger data files will be generated as a result.

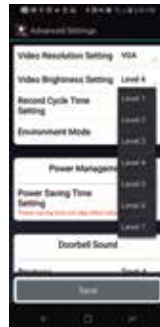


Video resolution

- This menu provides selectable image resolutions of 640x480 pixels (**VGA**) and 1280x720 pixels (**HD**). The higher resolution setting provides better quality footage, but it requires more network bandwidth, more memory space, longer upload times and increased battery consumption.

Video brightness

- From this submenu, the user can adjust the brightness level. The intensity ranges from 1 being the lowest to 7, which is the highest setting.



Record cycle time

- This feature allows you to set up the video recording time, from 5 to 60 seconds.
- Keep in mind that longer videos will consume more battery power for recording and also uploading the images to the cloud.
- Please note that motion clips with a duration of 30 and 60 seconds are not supported for backup in Google Drive.

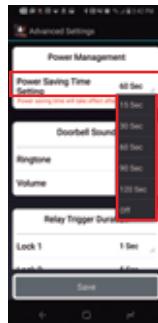
Environment mode

- Choose the refresh rate to match the frequency of the light in your environment. The correct setting of 60Hz or 50Hz depending on the electrical frequency in your location will prevent the flickering effect from appearing on your video.



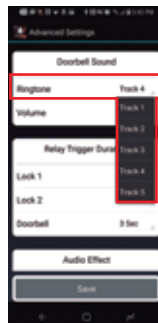
6.11 Power management

- The Power saving time setting is used to determine the time for the device to stay awake after being triggered.
- This is particularly useful when the doorbell camera is used with battery power, as shorter active intervals keep battery consumption low.
- Longer awake intervals require more power to operate but provide sufficient time for the device to establish a connection via the app while you are away.
- This feature is enabled by default. During the initial setup, it is recommended to turn it off to maintain the stability of the connection.



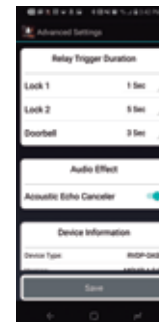
6.12 Doorbell sound

- Use this menu to select the doorbell ringtone and volume level.
- The ringtone can be muted if you want to completely cancel the sound.



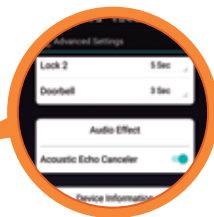
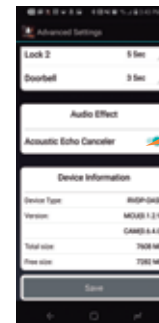
6.13 Relay trigger duration

- Use this menu to set up the delay time for your doorbell to chime when a visitor presses the button, or other external devices to be triggered after the unlock controls for the door or gate are pressed.



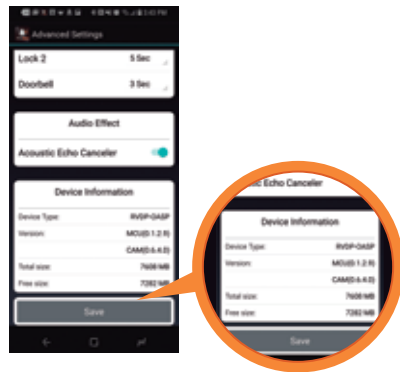
6.14 Audio effect

- The **Acoustic Echo Canceller** enhances the audio quality by suppressing or removing the audio feedback in two-way communications. This feature comes enabled by default.



6.15 Device information

- It displays the device type, system information, firmware version, memory size and space available.



7. Advanced operation - iOS

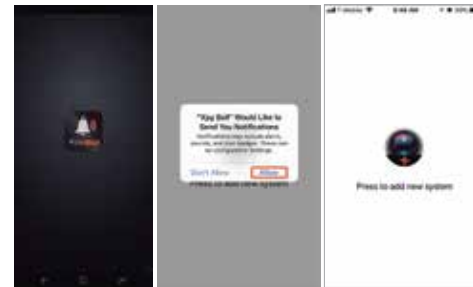
7.1 Mobile application

- **Important:** It is highly recommended to set your mobile device's time setting to automatic. Having time settings set to Manual may cause synchronization delays between the mobile device and the doorbell.

1. Download the **XpyBell** application from the Apple App Store.



2. Your mobile device must be actively connected to the Wi-Fi network in which the doorbell camera will be linked to.
3. Next, launch the app from your mobile device, you will get a popup alert asking to allow Xpy Bell to send notifications alerts. Tap on **Allow**. If **Don't Allow** is selected, you will not get any notifications from Xpy Bell. Proceed to select **Add new system**.



4. Tap the **Scan DID Label** option to read the QR code located on the back of the doorbell camera. You can also enter the DID sequence manually. You will get a security popup asking to allow the app access the camera. Accept by tapping on **OK**.
5. Enter a **System name** to identify the device (maximum of 20 characters).
6. Enter the default **Security code 123456** assigned to the device:



7. Tap on **OK** after all fields are filled. You will get a popup saying **Save successfully**.



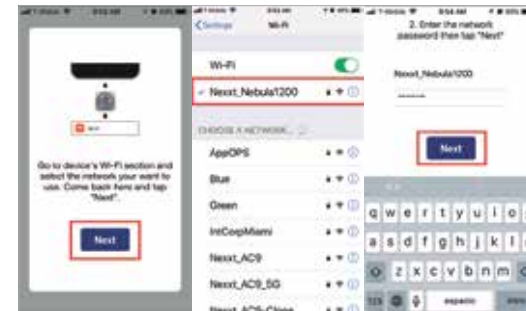
7.2 Wi-Fi setup

1. Once you complete the above steps, the Wi-Fi configuration screen will pop up.

2. Tap on **Setup**.

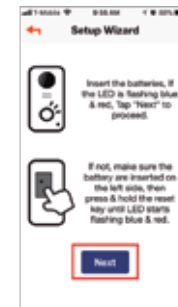


3. Go to the **Wi-Fi Settings** on your phone and verify that you are connected to the Wi-Fi router you wish to link the XpyBell to. Go back to the app and click on **Next** to enter the password for the Wi-Fi router: Click on **Next** to continue.



4. Make sure that the LED bell indicator is blinking alternatively red and blue. Tap **Next**.

Note: If the doorbell LED is not blinking red and blue, take off the back panel, and press the reset button and the doorbell button simultaneously until the LED starts blinking red and blue.



5. You will now have to go back into your mobile Wi-Fi Settings and connect to the XpyBell. The name will start with "RVDP-XXXXX". Connect to it and use the default password: **12345678**. Then tap on **Join**.



6. Go back to the XpyBell app and tap on **Next** to complete the connection of the XpyBell to your Wi-Fi router. Wait a couple of minutes for the network setup to complete. Tap on **OK** when done.

Note: The red and blue LEDs will blink momentarily, changing to solid blue when the device is successfully connected to the network.



7.3 Cloud storage account

A cloud account is designed to keep a record of events and footage captured by the doorbell camera. Please note that you are given the option of creating a new account or signing into an existing one. All registered devices will have access to the doorbell camera data associated to that account.

During this initial setup, the Setup Wizard will guide you through the accessing a cloud-based private Google account. However, you have the option of configuring one at a later time. Video footage will still be recorded in the micro-SD memory card.

In order to link your cloud-based account, please follow the steps below:

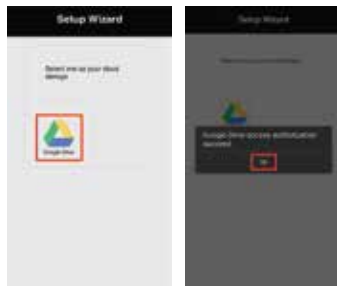
1. Start by tapping on **Proceed**.



2. A Cloud Service Account will be required. If you already have an account, please sign in and continue to step 3. If you do not have a Cloud Service Account, Click on **Create Account**. Fill out the following fields: User ID, Password, and Confirm Password, and click on check box to agree to the Privacy Policy. Enter the verification code, and click **Submit**. Proceed to log in to the account you just created. Click **Sign In** to continue.

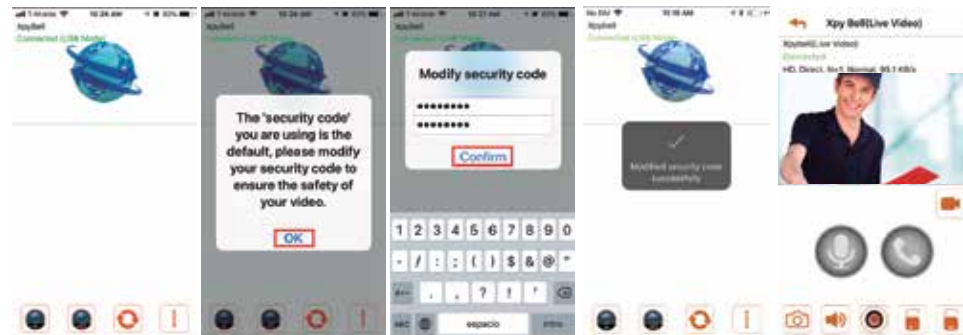


3. You will be prompted to choose a cloud storage. Tap on **Google Drive** (this requires the use of a Google Gmail Account). It may ask you to sign in to your selected Google Gmail Account. If it does, follow the on screen prompt. Once done, you should get a confirmation popup. Click on **OK**.



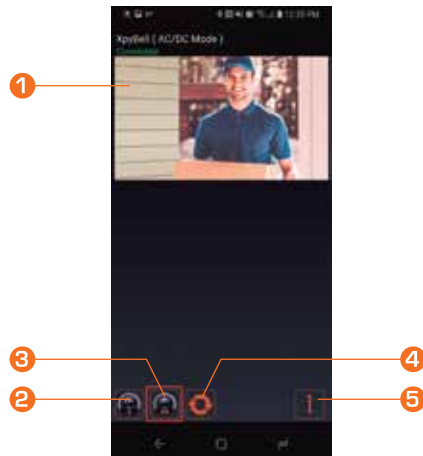
4. You will now be logged in to the XpyBell. Click on the picture of the Earth, to log in to the XpyBell. You will be prompted to first change the default security code. Click **OK** and enter a new security code. Create a brand new password that is simple to remember but hard to guess, then click **Confirm**. You will get a popup if the security code was successfully changed. If associating other mobile devices to the doorbell, remember that a new password will need to be used to log in.

Please note that the above step can only be concluded if the device is AC operated. This will not work if the doorbell runs only on battery power:



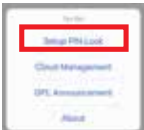



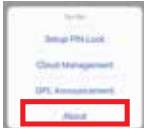
7.4 Main page interface

The main page will now be displayed on your mobile device. This interface shows an overview of the doorbell camera, with access to functions and configuration settings needed to manage and operate this monitoring device in your network.



Number	Icon	Function	Description
1		Status bar and Camera preview	Provides real-time system information, device name and connection status, including direct access to the camera's live feed when tapped.
2		Add device	Opens the menu to integrate and register a doorbell video device to your network.
3		Device settings	Grants access to the device configuration, advanced settings, activity log, storage and more.
3.1		Device Settings Additional settings	<ol style="list-style-type: none"> Once the submenu is enabled, click on the cog wheel to access the device information page and the Advanced menu option. The latter requires administrator's credentials to log in. Click on the recycle bin icon if you want to delete the doorbell camera from your device. Click on the Event list icon to filter and select the motion-triggered events you want to playback and/or download.

Number	Icon	Function	Description
			Note: If the wrong password is entered, the application will be blocked and the Advanced menu will be disabled as a result. The application will have to be reconfigured.
4		Refresh	Updates the connection and status of the doorbell.
5		Device information	Contains firmware app information, notification settings and PIN lock set up.
5.1		Device Information Setup PIN lock	Sets up a PIN lock to block unauthorized users from viewing the camera, which must be entered every time the app is launched. 1. Enter a four-digit PIN code. 2. Check the Enable lock when starting box. 3. Confirm your PIN to unlock. Note: If you forget the PIN, you must delete and reinstall the app.
5.2		Device Information Cloud Management	This option lets you edit your Cloud Account and Device Management.









Number	Icon	Function	Description
5.3		About	Displays the doorbell camera firmware version.

7.5 Live view

From the main page, click on the device preview to open the monitoring window and view footage captured by the camera on your mobile phone in real time. From this interface, the following actions can be performed.

Note: Live view does not work when the doorbell is on standby mode and only powered with batteries.



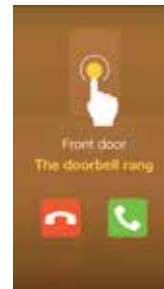
Icon	Function	Description
	Microphone	Tap once to speak with visitors standing in your front door. The icon changes from grey to orange. Tap once again to disable the microphone to end the conversation.
	Handset	Tap to toggle the audio output between the earpiece and the phone speaker.
	Speaker	Tap to mute the audio coming from the doorbell. A second tap will restore the speaker function.
	Snapshot	Tap once to capture a snapshot of a video image coming from the doorbell camera. Image files are stored in your mobile device.
	Record	Tap to start recording footage captured by the doorbell camera. To stop the recording feature, tap once again.
	Stop video (audio only)	If you experience delays while communicating with the visitor due to slow connection speeds, press this button to stop video feed and to free up bandwidth for audio stream only.
	Door unlock trigger	Tap the icon once and enter the admin password to remotely open the door for a visitor (3rd party device required).
	Gate unlock trigger	Tap the icon once and enter the admin password to remotely open the gate for a visitor (3rd party device required).

7.6 Answering your door

- When someone is at your door and presses the doorbell button, a call is automatically triggered to your smart phone, as illustrated here.



Just like any regular call, you may choose to:

- Ignore the visitor call request, or
- Accept the call from the visitor



7.7 Event video playback

The recorded footage captured by the camera is automatically saved to the memory card. You can remotely access the file(s) for playback.

- From the main page, tap on the **Device settings**  icon.
- Click on the **Event List**  icon.


- The default search is on SD card mode. Set a time range in order to filter and display the recorded file(s) on the SD card you want to view.




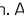
4. If you want to view the events from the Cloud, tap on **Mode** and choose **Google Drive** followed by **Done**. Set a time range in order to filter and display the recorded file(s) on the Google Drive you want to view.



5. To playback a video simply tap on the date/time of the video you wish to view. During playback, you can tap on the **Pause**  icon to stop the video. To resume, tap on the **Play**  icon once again.

6. If you want to save a copy of a particular event in your mobile device, select the file and then tap on **Download** . It will be saved once it says Download Complete. The title date of the video will turn red, if it has been downloaded. If you wish to view that event, tap on Mode. Select Phone and followed by Done. This is where all your downloaded events will be stored.



7. If you want to remove one or multiple events, tap on the  icon to bring up the **delete** buttons. Press Delete on the ones you wish to eliminate. To remove all files at once, tap on the  icon on the lower left corner of the screen. A dialog box will popup asking for confirmation to delete all selected events. Click on **Yes**.



8. Advanced configuration-iOS

This chapter explains the advanced configuration parameters accessible only to the user with administrator rights. General users can receive notifications and view images either captured or recorded by the camera, however, they are not allowed to manage the device.

8.1 Admin password

This code is required to access the **Advanced Settings** page for system configuration and management of the doorbell camera. The default admin password is **123456**.



- For security purposes, we strongly recommend changing the default code to a new and personalized password so as to prevent unauthorized access.
- A strong sequence must be composed of 8 alphanumeric characters (containing at least 1 uppercase letter, 1 lowercase letter and 1 Arabic numeral, with no spaces or special symbols).
- To keep your device protected, a good practice is to reset the admin password on a periodic basis.

Note: If you forget the admin password, press and hold the reset button for 5 seconds to restore the device to its factory-default configuration.

8.2 Device security code

- This code is required to setup or change the password that grants access to the device from a remote location. The default security code is **123456**.
- The application requires you to change the password after the initial configuration is completed. Refer to section **Wi-Fi setup** in this manual.
- A strong sequence must be composed of 8 alphanumeric characters (containing at least 1 uppercase letter, 1 lowercase letter and 1 Arabic numeral, with no spaces or special symbols).
- To keep your device protected, a good practice is to reset the security code on a periodic basis.

Note: If you forget the device security code, press and hold the reset button for 5 seconds to restore the device to its factory-default configuration.

8.3 Time setup

It synchronizes the time on your doorbell camera with the real time and date of your Wi-Fi network.

8.4 Wi-Fi setting

Use this menu to configure and manage the wireless connection to your network. Go to the previous section of this manual for a detailed description of this function.

Note: Changes take effect after system reboots.

8.5 Cloud settings

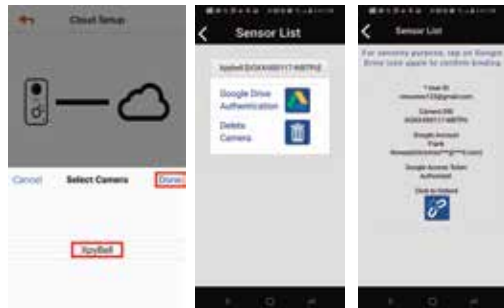
- If you did not configure a Google private account during the initial setup, the application will automatically detect that no cloud storage is linked to the doorbell camera.
- An account can be set up at any time by selecting **Advanced** → **Cloud setting** → **Setup**. Then follow the steps described earlier in section **Cloud storage account** of this manual.
- Editing and management of the cloud-based account is also done through this menu.



- To modify the password, go to **Edit account**, fill the required fields and click on **Submit** when done.



- Select **Device management** to view all the devices registered to the cloud account.
- You can also remove the doorbell camera from the cloud account to stop using Google Drive as storage platform.



8.6 Firmware update

- Use this option to check and download the latest version of the **XpyBell** app.
- Make sure to insert a memory card with enough space before updating your device.

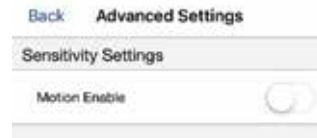
Note: Changes take effect after system reboots.

8.7 Notifications

- A push notification is sent to your mobile device to alert you every time activity is detected in or around your door.
- This function can be disabled if you do not wish to receive these alerts.

8.8 Sensitivity

- Enables or disables the **Motion detection** sensor of the camera.
- Please note that the device will not take snapshots, record videos or send out push notifications if the motion detection feature is disabled.



8.9 SD card

- The **SD card overwrite** function allows new files to overwrite previously recorded ones when the SD memory is full.
- It ensures that no important information is missed by backing up the most up to date video recordings captured by the camera.



8.10 Video and photo

This menu allows you to set all image and format related parameters, such as Record mode, Framerate setting, Video resolution, Brightness level, Record cycle time setting and Environment mode.

Record mode:

Choose between taking a Photo or a Video when motion is detected.



Video framerate

- This menu allows you to determine the framerate speed for recording videos.
- It ranges from 15fps to a maximum of 30fps.
- The higher the frame rate you choose, the sharper and more detailed your footage will be for playback. However, more bandwidth is needed, and larger data files will be generated as a result.

Video resolution

This menu provides selectable image resolutions of 640x480 pixels (**VGA**) and 1280x720 pixels (**HD**). The higher resolution setting provides better quality footage, but it requires more network bandwidth, more memory space, longer upload times and increased battery consumption.



Video brightness:

From this submenu, the user can adjust the brightness level. The intensity ranges from 1 being the lowest to 7, which is the highest setting.



Record cycle time

- This feature allows you to set up the video recording time, from 5 to 60 seconds.
- Keep in mind that longer videos will consume more battery power for recording and also uploading the images to the cloud.
- Please note that motion clips with a duration of 30 and 60 seconds are not supported for backup in Google Drive.

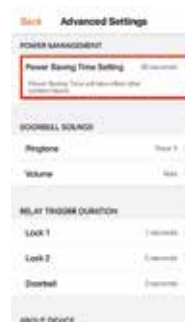


Environment mode

Choose the refresh rate to match the frequency of the light in your environment. The correct setting of 60Hz or 50Hz depending on the electrical frequency in your location will prevent the flickering effect from appearing on your video.

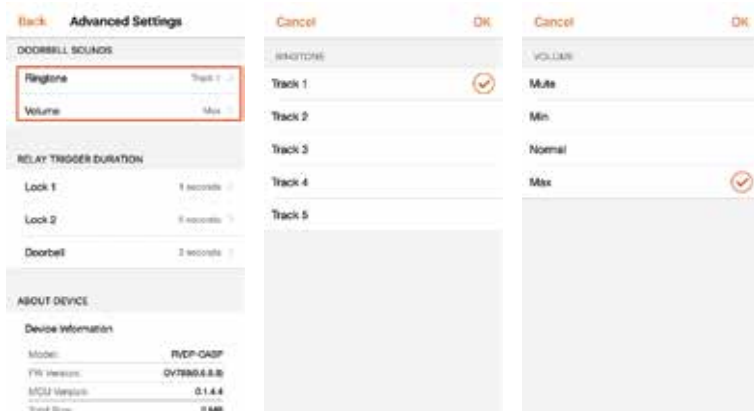
8.11 Power management

- The Power saving time setting is used to determine the time for the device to stay awake after being triggered.
- This is particularly useful when the doorbell camera is used with battery power, as shorter active intervals keep battery consumption low.
- Longer awake intervals require more power to operate but provide sufficient time for the device to establish a connection via the app while you are away.
- This feature is enabled by default. During the initial setup, it is recommended to turn it off to maintain the stability of the connection



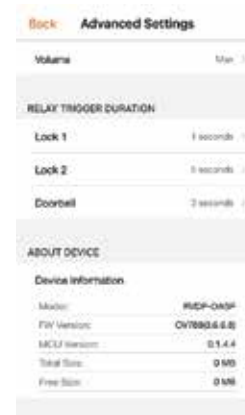
8.12 Doorbell sound

- Use this menu to select the doorbell ringtone and volume level.
- The ringtone can be muted if you want to completely cancel the sound.



8.13 Relay trigger duration

- Use this menu to set up the delay time for your doorbell to chime when a visitor presses the button, or other external devices to be triggered after the unlock controls for the door or gate are pressed.



Technical specifications:

MPN	AIOMPF14U1
	Wireless doorbell video camera
Camera	
Image sensor	High-definition 1/4in CMOS
Lens	2.8mm
Weatherproof rating	IP55
IR LED quantity	3 IR LEDs + light sensor
Minimum illumination	1 lux with IR
Night vision range	5m
IR cut filter	IR cut filter with auto switch
Zoom	Digital zoom
Terminations	12V door unlock trigger, dry contact trigger, wired chime trigger
Memory card slot	Up to 32GB micro-SD (includes 8GB micro SD)
Dimensions	6.3x2.6x1.9in
Weight	0.9lb
Video/Image	
Resolution	720P / 1MP
Compression	H.264
Effective number of pixels	1280(H)×720(V)
Viewing angle	90°
Frame rate	Up to 25fps
Live view	Included with the mobile application
Features	Live view On/Off control, snap shot, manual record
Audio	
Communication	Two-way audio
Compression	Device to APP: PCM / APP to device: ADPCM
Input	Built-in microphone and speaker
Output	Built-in microphone and speaker
Network	
Interface	Wi-Fi connection
Supported protocols	TCP/IP, UDP, DHCP, P2P
Stream	Dual stream
DHCP	Automatic

Wireless	
Standards	IEEE 802.11n: 150Mbps IEEE 802.11g: 54Mbps IEEE 802.11b: 11Mbps
Frequency	2.4GHz
Antennas	Internal
Antenna gain	2dBi
Network security	WPA, WAP2, AES 128bit encryption
Surveillance management	
Remote management	Included
Multiple user management	1 user for live view / multiple user notification
Mobile app	Android and iOS
Alarm and notifications	
Motion detection	Included
Notification method	Alarm via push notification
Environment	
Operating temperature	-22°F-122°F
Storage temperature	-40°F -158°F
Relative humidity	Operating humidity: 10%-90% non-condensing Storage humidity: 5%-90% non-condensing
Additional information	
Minimum system requirements	Android V 4.2 or above / iOS 7 or above
Certifications	FCC
Warranty	One year

